



soundform™



Soundform introduces sustainable design alongside flexibility and classic shapes, which enable sound treatment with character.

Noise can be defined as excessive sound, which causes disturbance. It is a necessity to treat noise when required, so that spaces can be experienced in the way that they were intended. However, sound treatment doesn't have to be something that only deals with noise disturbance, it can also be a defining visual component within spatial design.

Leading on from many years of producing more standard styles of acoustic panel treatments, Soundform panels have been developed as a more aesthetically considered approach for treating sound reverberation.

Soundform is a sustainable acoustic paneling product that can be incorporated into your interior design vision. With a selection of panel designs available in the range and a vast array of finishes, you can select individual or multiple interconnecting panel designs and alter their layout to create a unique Soundform pattern.

Form a strong design identity with the sound absorption you require.

What is sound?

Sound is the vibration that humans and animals hear and experience at varying frequencies. Sound is experienced both psychologically and physically; therefore its effects can impact on an experience in either positive or negative ways.

How does Soundform treat sound?

In simple terms, sound penetrates the Soundform panels through the open areas of the surface and then diminishes in the air cavity behind. It is generally advised

to place acoustic mineral wool in the air cavity behind to increase Soundform's absorption performance (Varying density acoustic wool products are available on the market).

Soundform panels require a minimum of 25mm clearance from the substrate or wall behind to create the air cavity. This minimum clearance, with a neat clean surface finish, can be achieved by utilising the concealed wall or ceiling mounting systems that can be supplied by Formnation.

Soundspun fabric is mounted onto the rear of each acoustic panel. This fabric assists in reducing reverberation and additionally conceals objects behind the panel such as mineral wool.

How do I use Soundform?

Soundform panels have been designed to enable a variety of interconnecting wall or ceiling patterns. Designers have the flexibility to use individual panel types or create unique patterns by using a selection of mixed panel types, for their interior projects.

Groove, Alcove, Swing and Swoop can all be used in conjunction with one another to form patterns across a wall or ceiling. Peak and Slide have been designed to form their own varied patterns within themselves.

Where can I use Soundform?

Soundform panels can be used to treat sound reverberation on a wide array of projects such as:

- commercial
- retail
- auditoriums
- hospitality
- sporting stadiums
- education
- healthcare
- and more

Soundform panels can be utilised in projects where acoustic treatments are needed and an aesthetic presence is desired on either the walls or ceilings.

Available finishes

- reconstructed veneer (recommended)
- natural veneer
- soundblack

Fire Rating

For projects with fire rating requirements, special options are available to satisfy Group 1, 2 or 3.

Access panels

Soundform access panels are available, measuring 600 x 600mm. Customised panels are also available.

Sustainability

We are proud that Formnation uses eco certified wood boards to make our acoustic panel products. Our acoustic panel products are also designed with reusability in mind, as they are fully demountable. All black MDF panels are supplied with an E0 rating.

Installation

Soundform panels are easily installed using either our concealed wall or ceiling fittings. Please contact Formnation for additional details on these systems.

How do I specify Soundform?

Design flexibility is an important factor in giving spaces a unique identity. Soundbasic panels have many design options to enable designers and architects to create an individual project identity.

It is best to refer to the individual product cards to go through the below specification checklist.

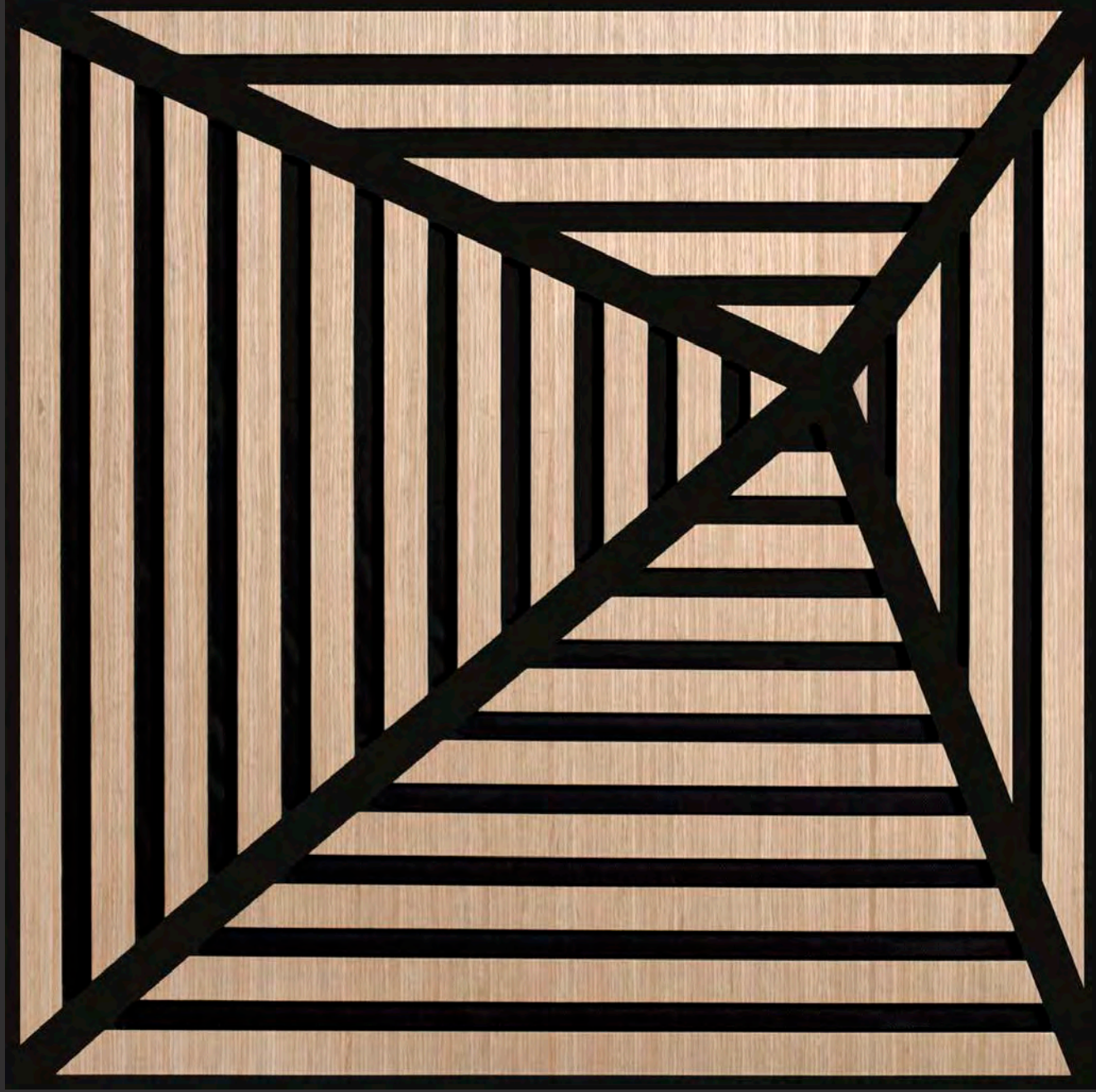
Select:

1. Soundform panel type
2. Substrate (Black MDF is recommended)
3. Surface
4. Finish
5. Special Options
6. Panel Variations (if necessary)

Should you require any customisation of the panels or more information, please feel free to contact us directly on either 1300 760 146 or info@formnation.com.au

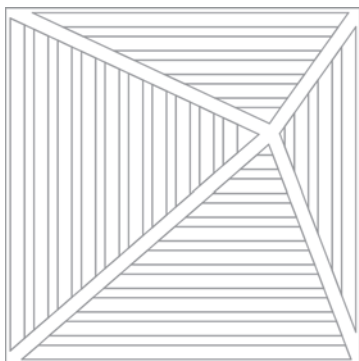
Specification Example

Soundform/Swing/Black MDF/E veneer
Essential Oak/Matt Gloss/Soundfix
Wall System.



SIZES

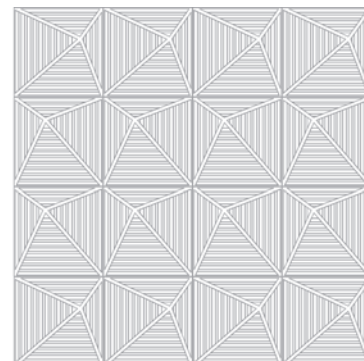
Standard available panel (mm).
Open Area – 31%



• 600 x 600

PATTERN EXAMPLES

Abstract pattern creating 3D effects using either random or organised orientations.



PANEL OPTIONS

Substrate

(Standard 16mm thickness)

- Black MDF
(PEFC Certified)

Surface

- Veneer
- Soundblack

Finish

- Matt
- Satin
- Semi Gloss

Special Options

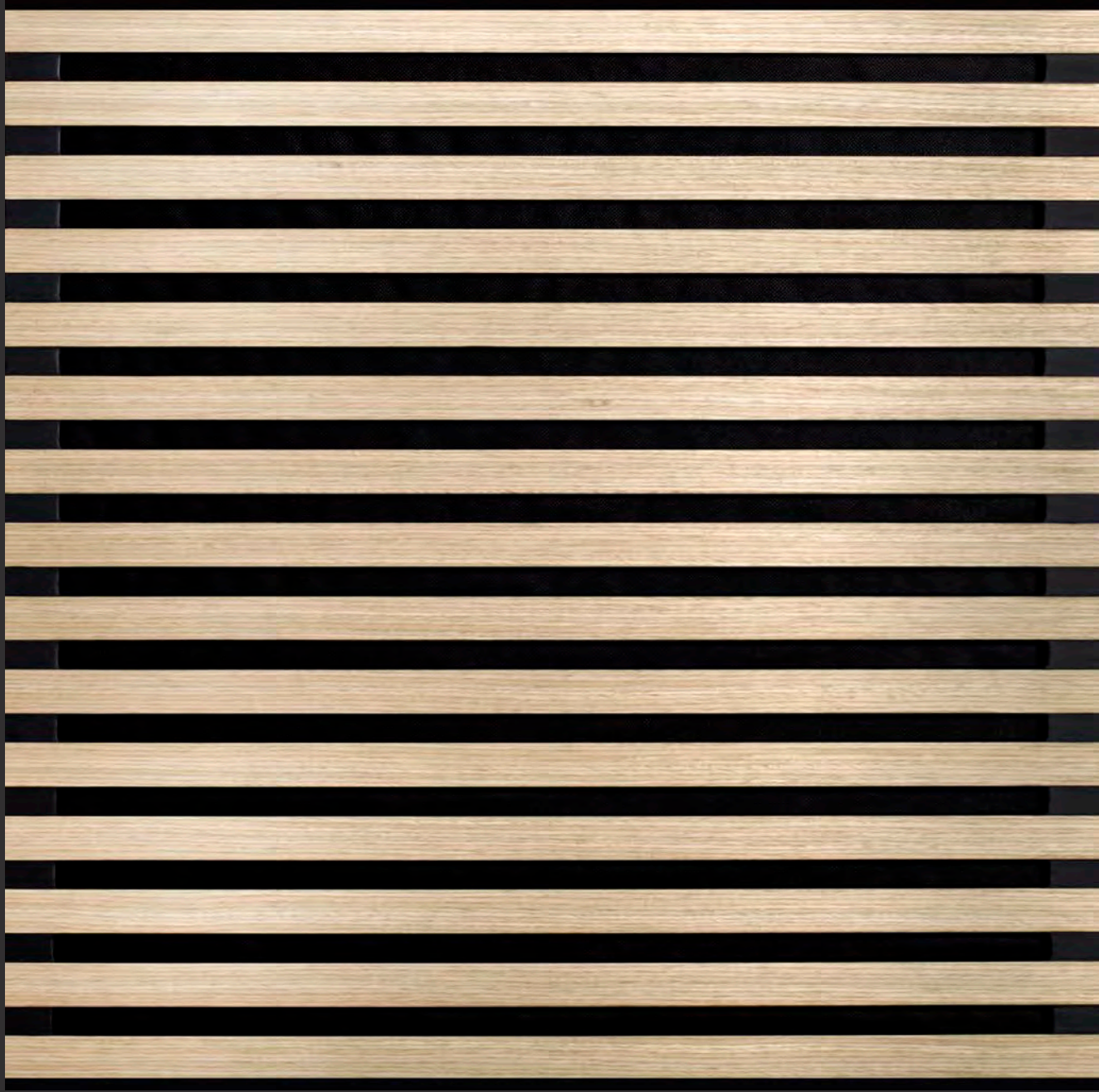
- Soundfix Wall System
- Soundfix Ceiling System
- Fire Rating

Panel Variations

- Ceiling 'drop in' tiles available (mm):
 - 592 x 592
- Access panels available
- Customised panels are available on request

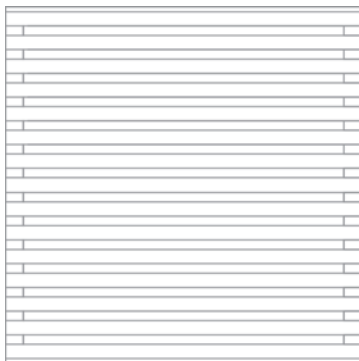
soundform

groove



SIZES

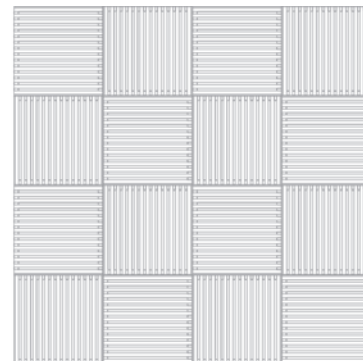
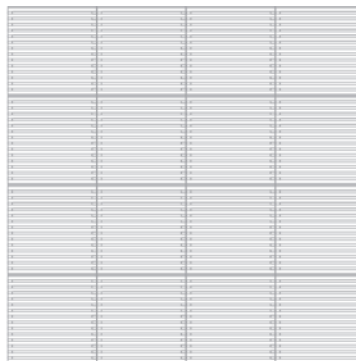
Standard available panel (mm).
Open Area – 33%



• 600 x 600

PATTERN EXAMPLES

Classic straight lines that can be used independently or in conjunction with other Soundform panels, to create an assortment of visual effects.



PANEL OPTIONS

Substrate

(Standard 16mm thickness)

- Black MDF
(PEFC Certified)

Surface

- Veneer
- Soundblack

Finish

- Matt
- Satin
- Semi Gloss

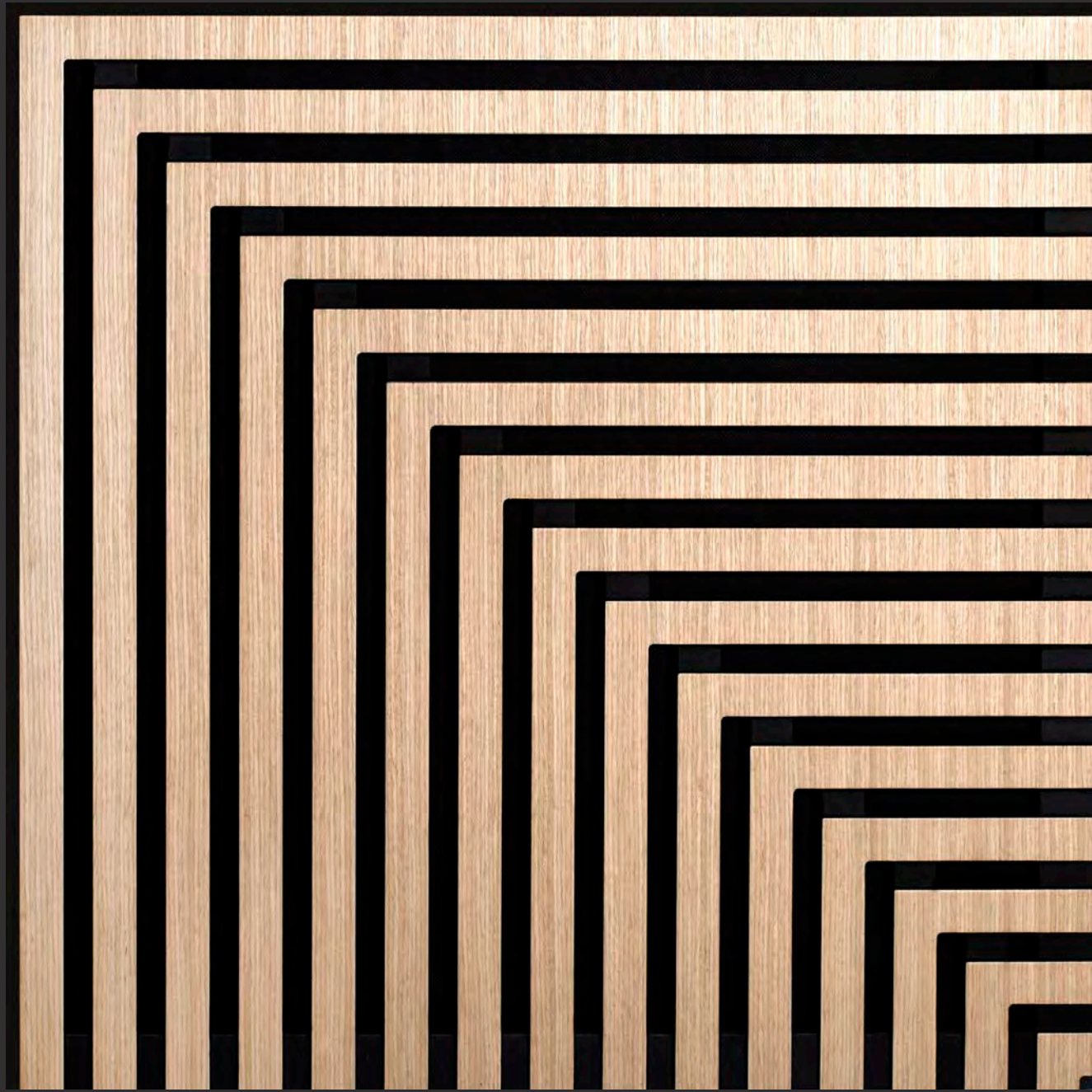
Special Options

- Soundfix Wall System
- Soundfix Ceiling System
- Fire Rating

Panel Variations

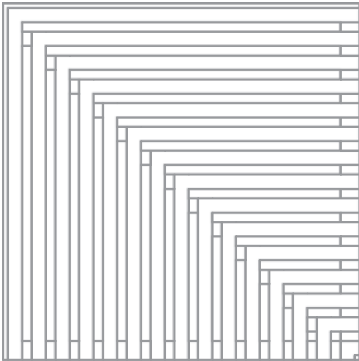
- Ceiling 'drop in' tiles available (mm):
 - 592 x 592
- Access panels available
- Customised panels are available on request

soundform alcove



SIZES

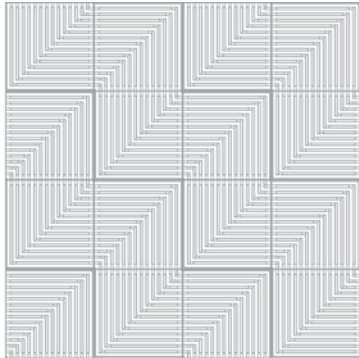
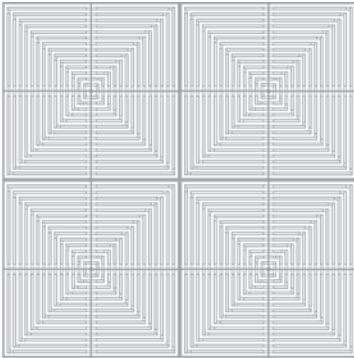
Standard available panel (mm).
Open Area – 32%



• 600 x 600

PATTERN EXAMPLES

Strong angles that create dynamic patterns including a herringbone look or use Alcove in conjunction with other Soundform panels to create a variety of visual effects.



PANEL OPTIONS

Substrate

(Standard 16mm thickness)

- Black MDF
(PEFC Certified)

Surface

- Veneer
- Soundblack

Finish

- Matt
- Satin
- Semi Gloss

Special Options

- Soundfix Wall System
- Soundfix Ceiling System
- Fire Rating

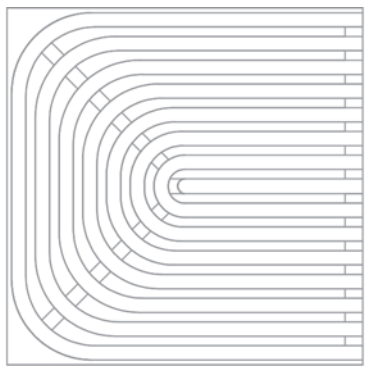
Panel Variations

- Ceiling 'drop in' tiles available (mm):
 - 592 x 592
- Access panels available
- Customised panels are available on request



SIZES

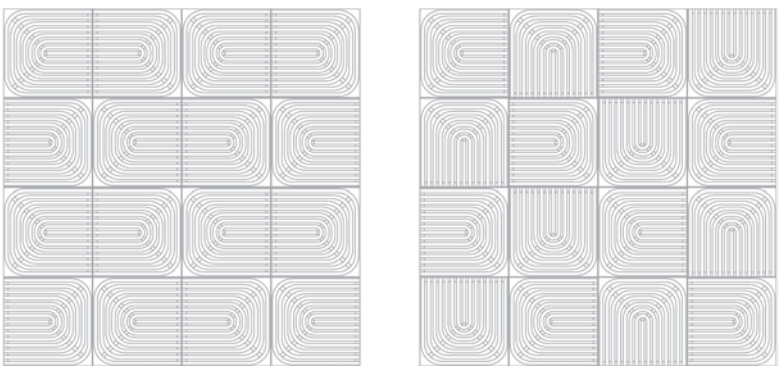
Standard available panel (mm).
Open Area – 35%



• 600 x 600

PATTERN EXAMPLES

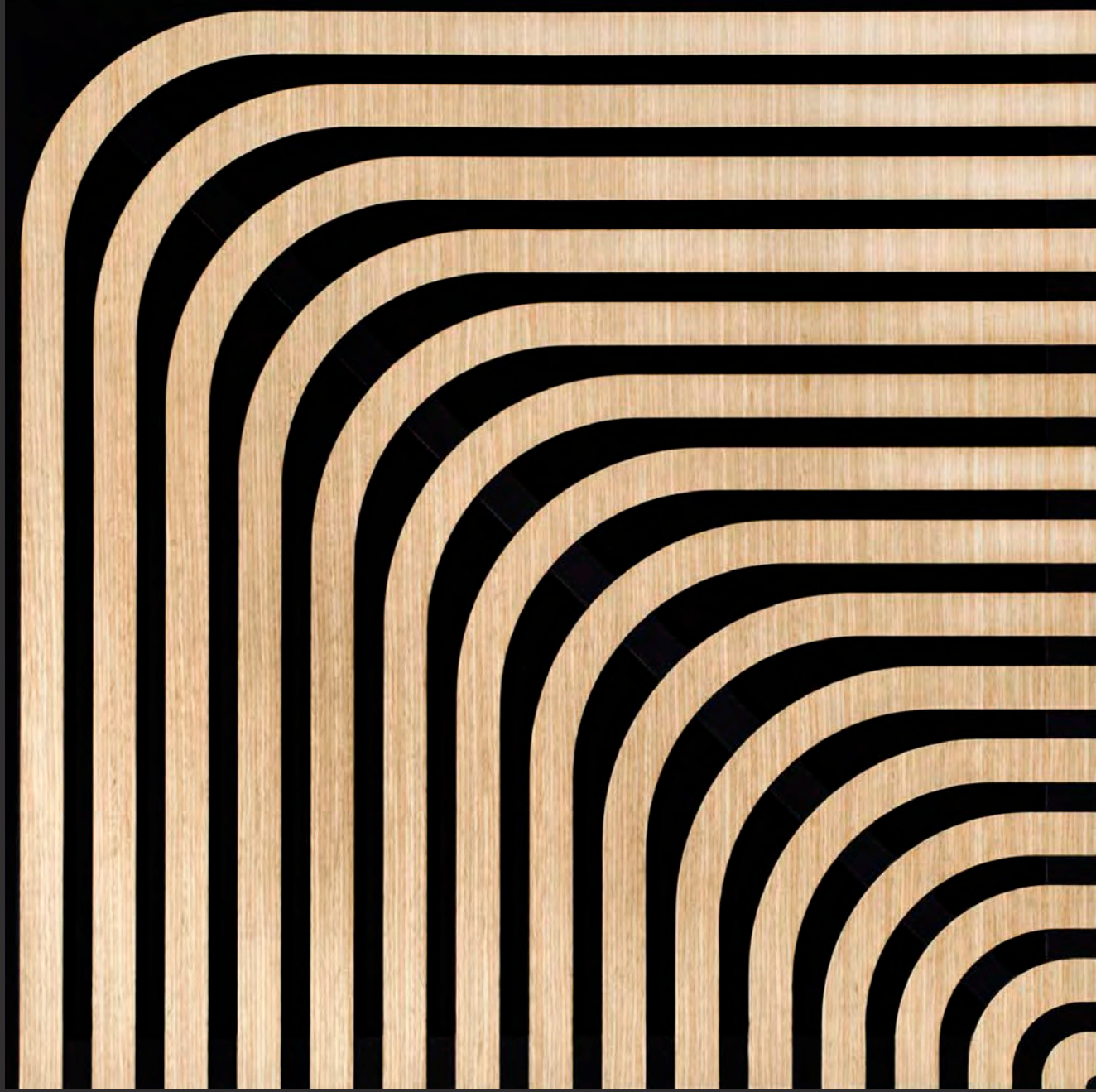
Sweeping lines that create simple retro patterns when used independently or use Swoop alongside Groove and Swing for dramatically fluid visual effects.



PANEL OPTIONS

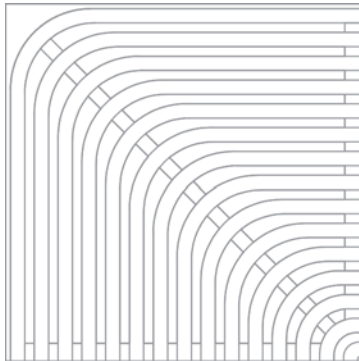
<p>Substrate (Standard 16mm thickness)</p> <ul style="list-style-type: none"> • Black MDF (PEFC Certified) 	<p>Surface</p> <ul style="list-style-type: none"> • Veneer • Soundblack 	<p>Finish</p> <ul style="list-style-type: none"> • Matt • Satin • Semi Gloss 	<p>Special Options</p> <ul style="list-style-type: none"> • Soundfix Wall System • Soundfix Ceiling System • Fire Rating 	<p>Panel Variations</p> <ul style="list-style-type: none"> • Ceiling 'drop in' tiles available (mm): <ul style="list-style-type: none"> • 592 x 592 • Access panels available • Customised panels are available on request
--	--	--	--	--

soundform swing



SIZES

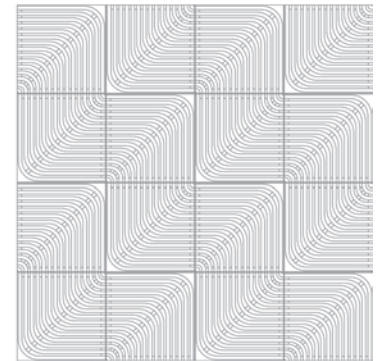
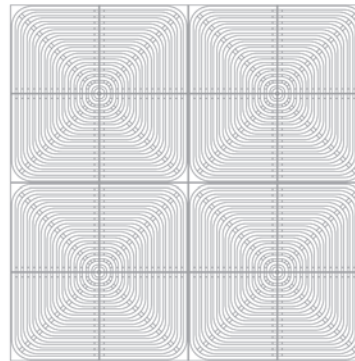
Standard available panel (mm).
Open Area – 34%



• 600 x 600

PATTERN EXAMPLES

Curvaceous lines which create sensual corner turns and array of classic patterns or use Swing in conjunction with Groove and Swoop for flowing linear effects.



PANEL OPTIONS

Substrate

(Standard 16mm thickness)

- Black MDF
(PEFC Certified)

Surface

- Veneer
- Soundblack

Finish

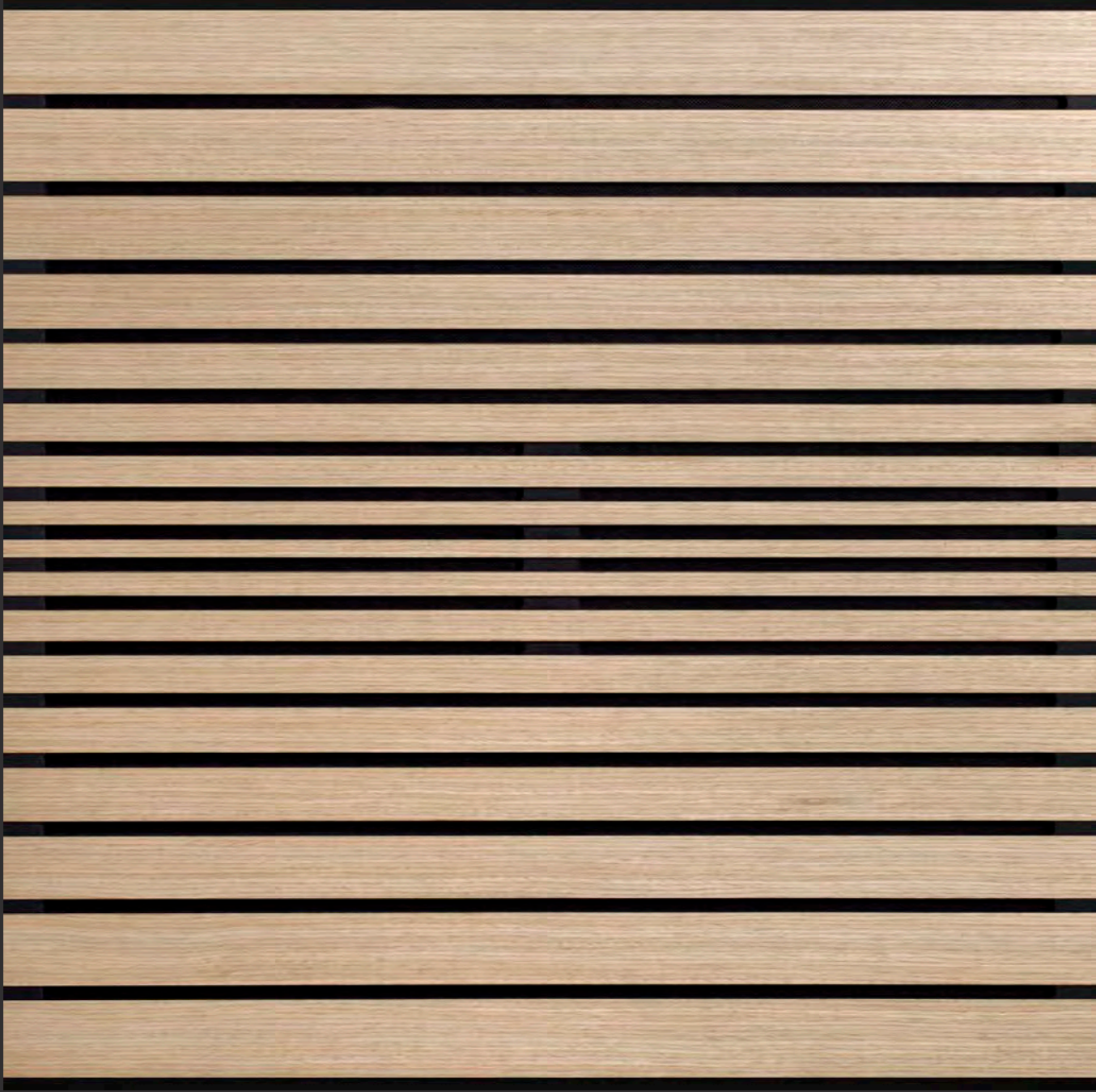
- Matt
- Satin
- Semi Gloss

Special Options

- Soundfix Wall System
- Soundfix Ceiling System
- Fire Rating

Panel Variations

- Ceiling 'drop in' tiles available (mm):
 - 592 x 592
- Access panels available
- Customised panels are available on request



SIZES

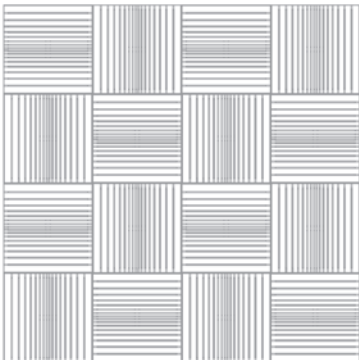
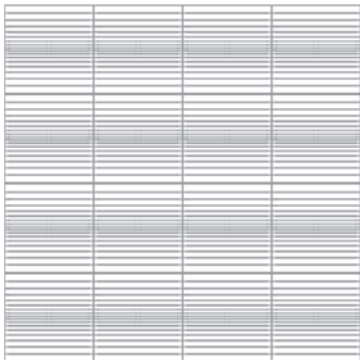
Standard available panel (mm).
Open Area – 18%



• 600 x 600

PATTERN EXAMPLES

Varied straight lines that create a visual wave effect or alternatively, a woven look can be achieved through using a hatching style pattern.



PANEL OPTIONS

Substrate

(Standard 16mm thickness)

- Black MDF
(PEFC Certified)

Surface

- Veneer
- Soundblack

Finish

- Matt
- Satin
- Semi Gloss

Special Options

- Soundfix Wall System
- Soundfix Ceiling System
- Fire Rating

Panel Variations

- Ceiling 'drop in' tiles available (mm):
 - 592 x 592
- Access panels available
- Customised panels are available on request